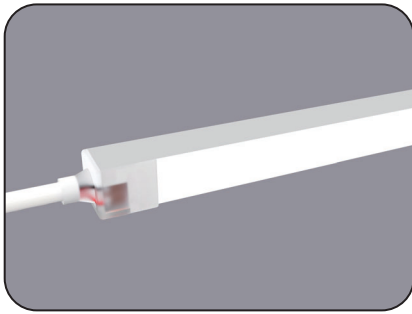
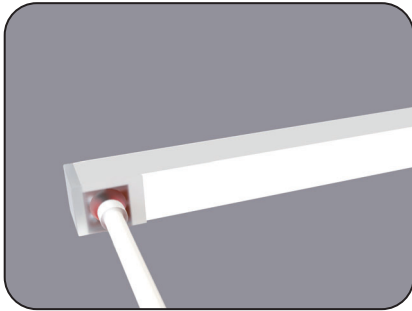
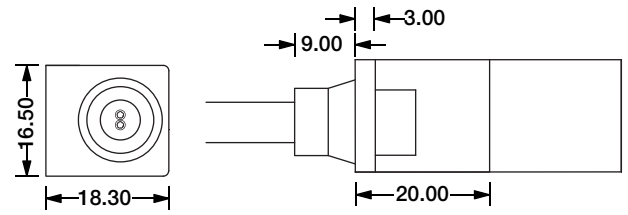


SF17 Configuration and Accessories

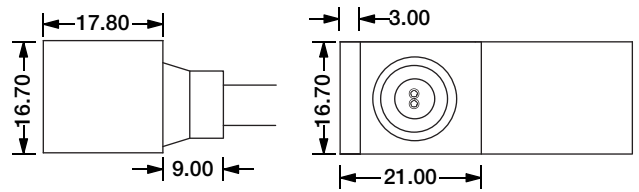
Mold injection Connector (IP68 Factory Assembly Only)



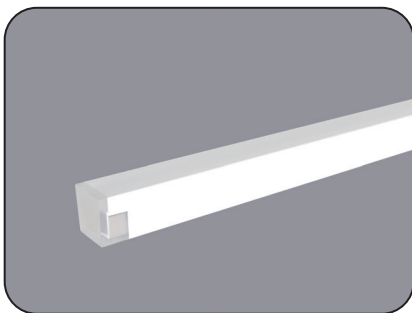
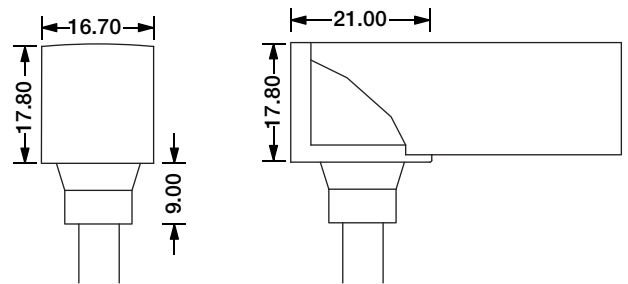
Direct Entry Connector
 MJ-SF17-A-D01/02/03
 MJ-SF17-A-D01SM
 MJ-SF17-A-D02SF
 MJ-SF17-A-D03SFM



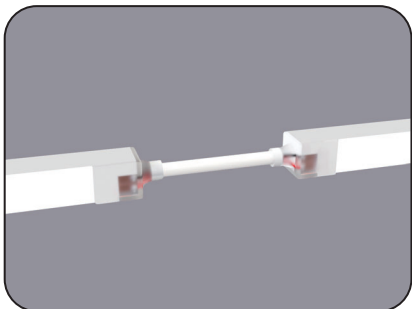
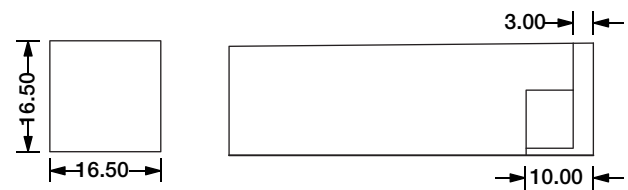
Side Entry Connector
 MJ-SF17-A-S01/02/03
 MJ-SF17-A-S01SM
 MJ-SF17-A-S02SF
 MJ-SF17-A-S03SFM



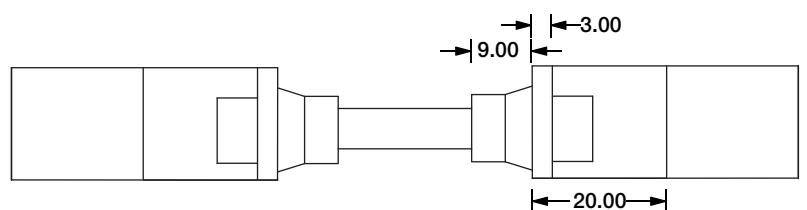
Bottom Entry Connector
 MJ-SF17-A-B01/02/03
 MJ-SF17-A-B01SM
 MJ-SF17-A-B02SF
 MJ-SF17-A-B03SFM



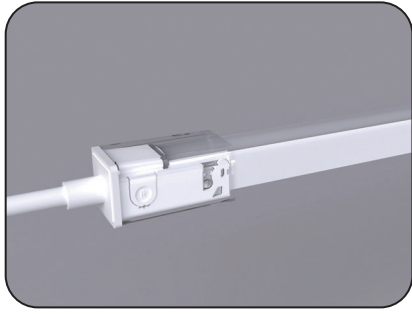
End Cap



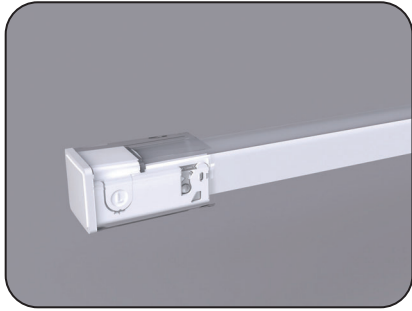
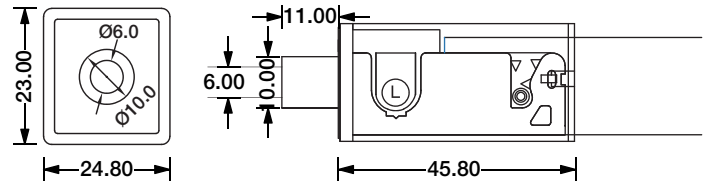
Jumper
 MJ-SF17-A-D-JC



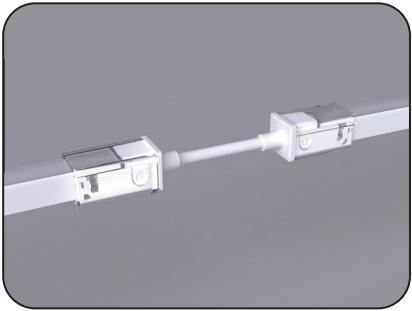
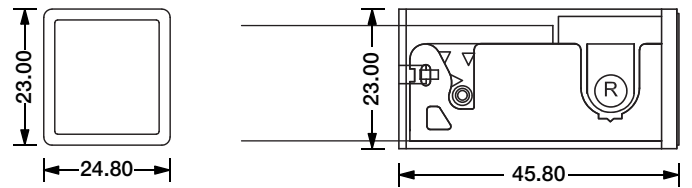
SF17 Configuration and Accessories



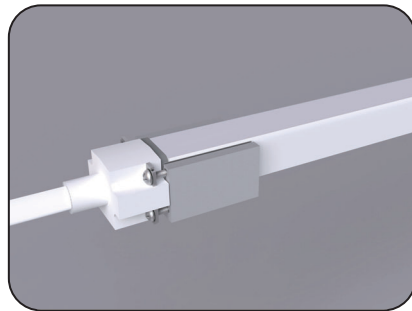
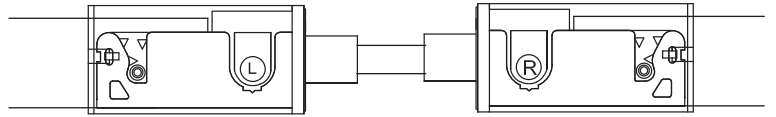
DIY Snap Connector
DIY-SN-FR-17-D-01/02-A



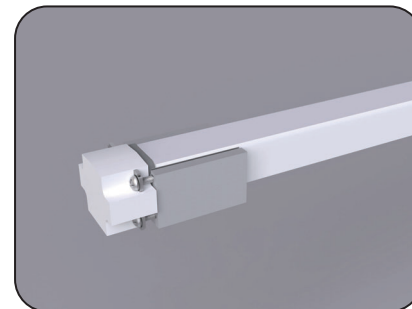
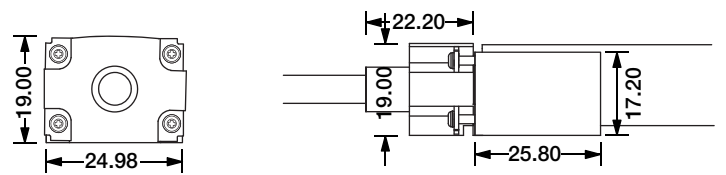
DIY Snap End Cap
DIY-SN-END-17-D-01/02



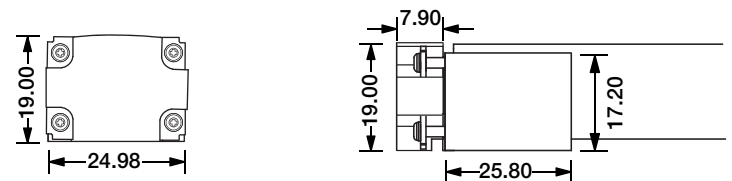
DIY Snap Extent Connector
DIY-SN-EXT-17-A



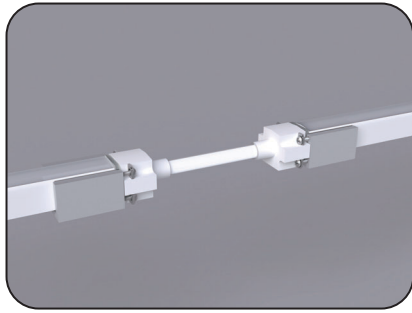
DIY Screw Connector
DIY-SC-FR-17-D-01/02-A



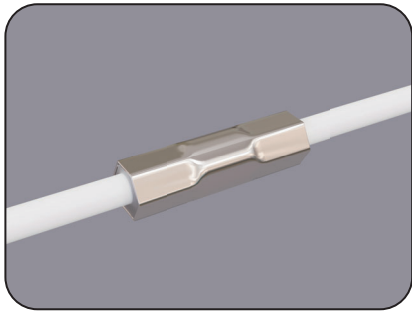
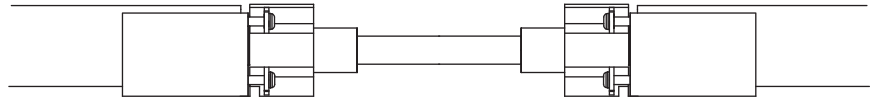
DIY Screw End Cap
DIY-SC-END-16



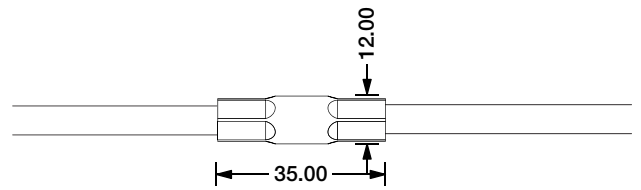
SF17 Configuration and Accessories



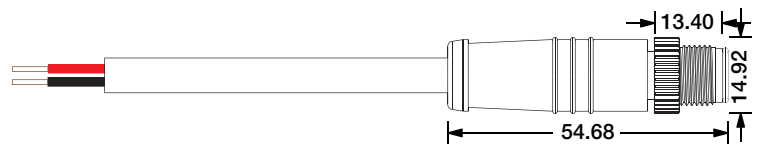
DIY Screw Extent Connector
DIY-SC-EXT-16-A



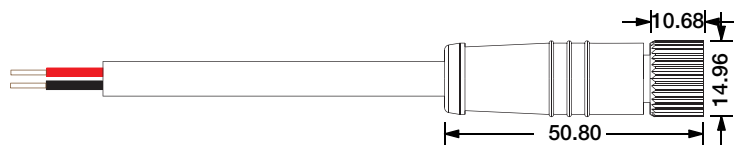
Waterproof Interrupter



Male Connector
M12-M-2C-18AWG-D6-W-0327-S

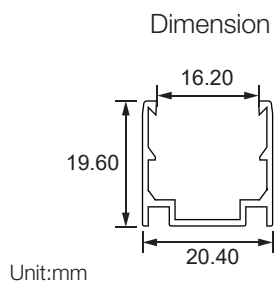
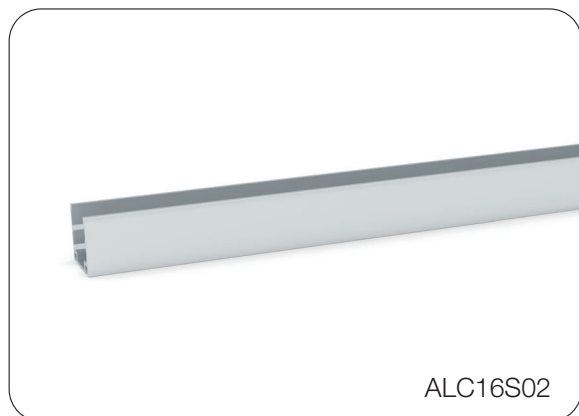


Female Connector
M12-F-2C-18AWG-D6-W-0327-S

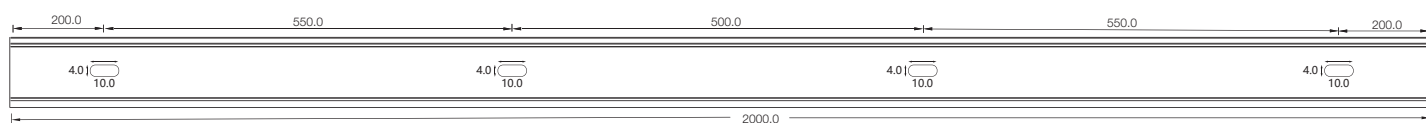
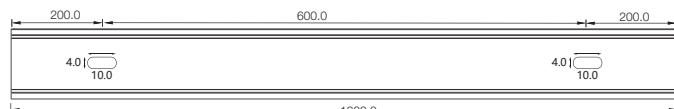
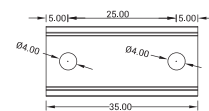
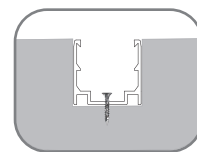
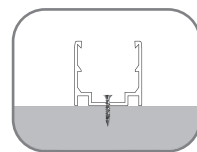


LED Linear Flex Mounting Channel

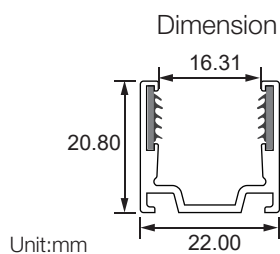
1. Aluminum Channel



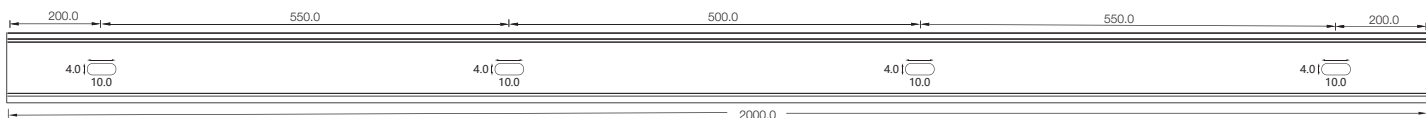
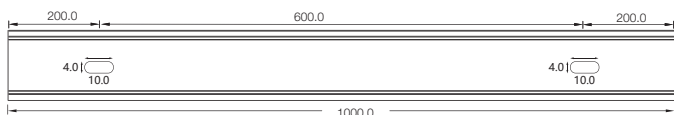
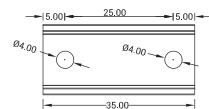
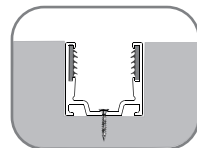
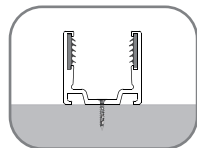
Installation Way



Model	W x H(mm)	Standard Length	Screw Holes	Holes Numbers	Suitable Product
ALC16S02-035	20.40*19.60	35mm	Φ4.0mm	2	F17, SF17
ALC16S02-100		1000mm	○4.0mm	2	F17, SF17
ALC16S02-200		2000mm	○4.0mm	4	F17, SF17



Installation Way

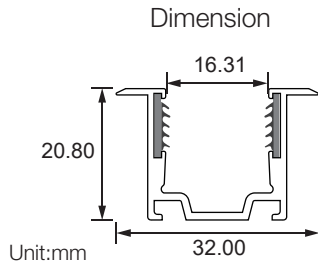


Model	W x H(mm)	Standard Length	Screw Holes	Holes Numbers	Suitable Product
ALC16S08-035	22.00*20.80	35mm	Φ4.0mm	2	F17, SF17
ALC16S08-100		1000mm	○4.0mm	2	F17, SF17
ALC16S08-200		2000mm	○4.0mm	4	F17, SF17

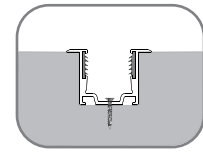
LED Linear Flex Mounting Channel



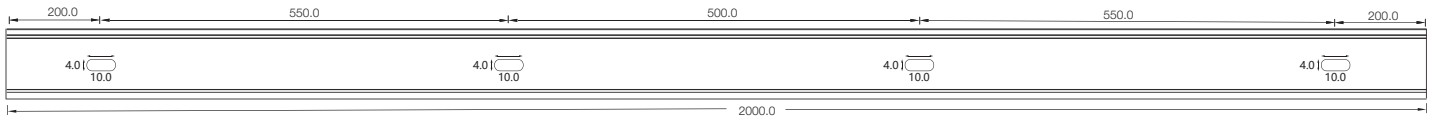
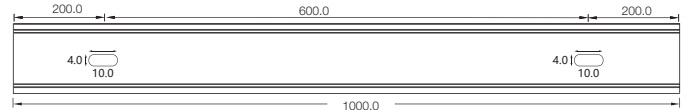
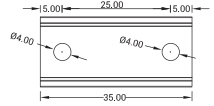
ALC16S07



Installation Way



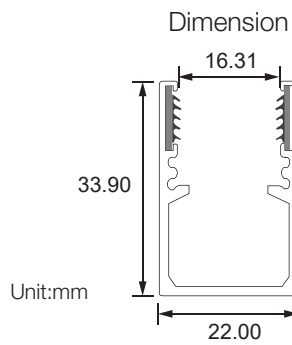
Recessed



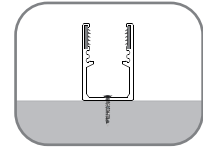
Model	W x H(mm)	Standard Length	Screw Holes	Holes Numbers	Suitable Product
ALC16S07-035	22.0*22.8	35mm	Φ4.0mm	2	F17, SF17
ALC16S07-100		1000mm	○4.0mm	2	F17, SF17
ALC16S07-200		2000mm	○4.0mm	4	F17, SF17



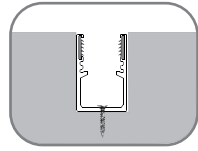
ALC16H02



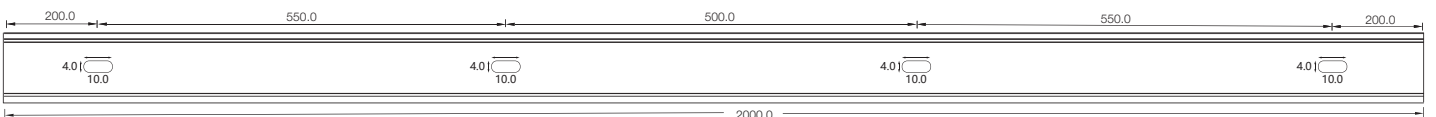
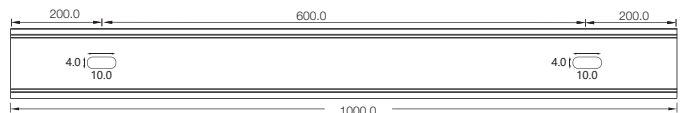
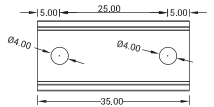
Installation Way



Surface Mounted



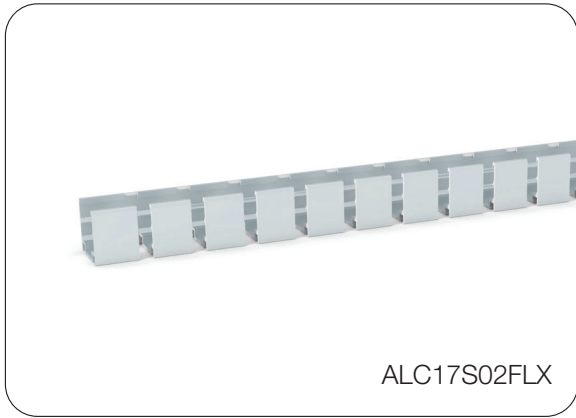
Recessed



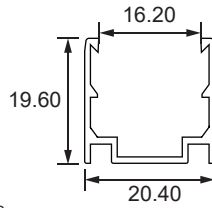
Model	W x H(mm)	Standard Length	Screw Holes	Holes Numbers	Suitable Product
ALC16H02-035	22.00*33.90	35mm	Φ4.0mm	2	F17, SF17
ALC16H02-100		1000mm	○4.0mm	2	F17, SF17
ALC16H02-200		2000mm	○4.0mm	4	F17, SF17

LED Linear Flex Mounting Channel

2. Flexible Aluminum Channel

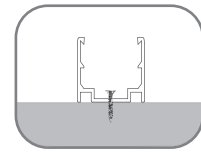


Dimension

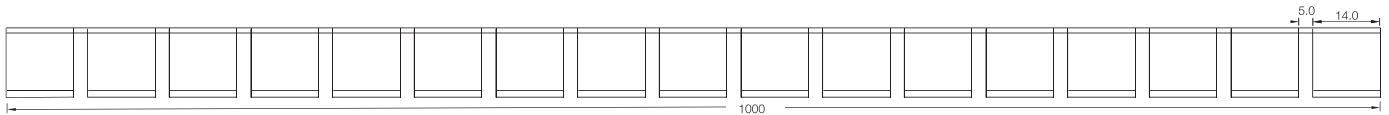
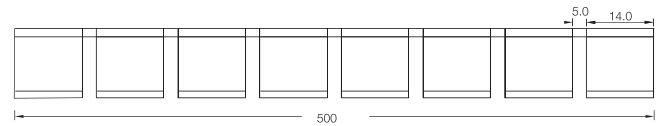


Unit:mm

Installation Way



Surface Mounted

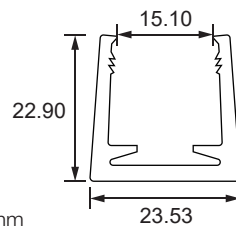


Model	W x H(mm)	Standard Length	Suitable Product
ALC17S02FLX-05	20.4*19.60	500mm	F17, SF17
ALC17S02FLX-10		1000mm	F17, SF17

3. Plastic Channel

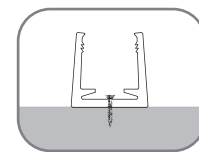


Dimension

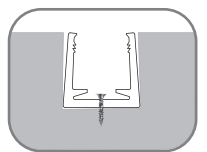


Unit:mm

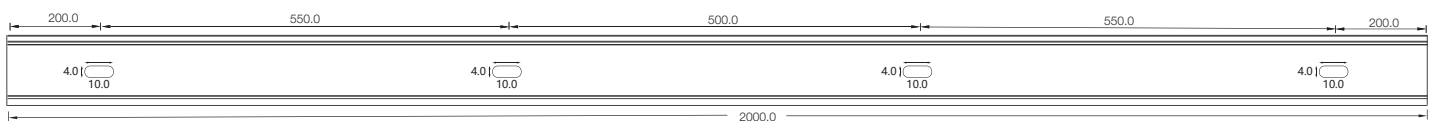
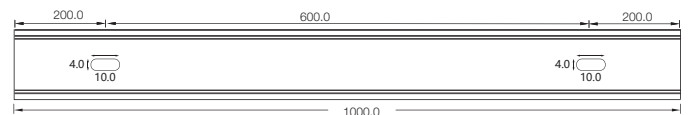
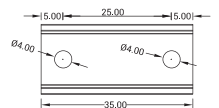
Installation Way



Surface Mounted

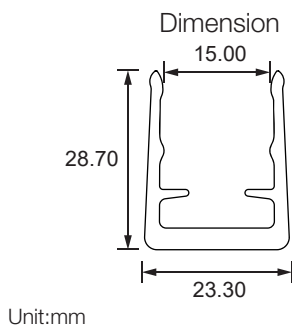


Recessed

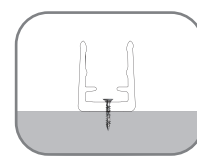


Model	W x H(mm)	Standard Length	Screw Holes	Holes Numbers	Suitable Product
PC16/17S02-T-100	23.53*22.90	1000mm	Φ4.0mm	2	F17, SF17

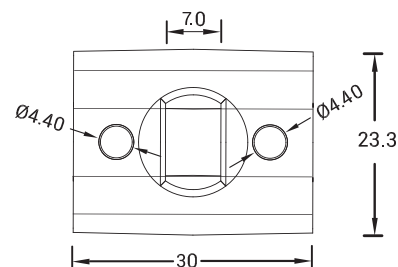
LED Linear Flex Mounting Channel



Installation Way

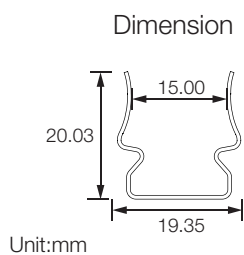


Surface Mounted

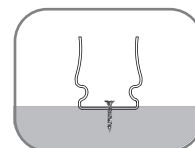


Model	W x H(mm)	Standard Length	Screw Holes	Holes Numbers	Suitable Product
SJJ-ZSH-008-PC	23.3*28.7	30mm	Φ4.40mm	2	F17, SF17

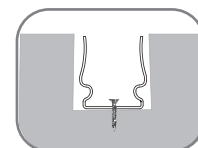
4. Stainless Steel Channel



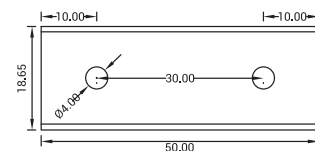
Installation Way



Surface Mounted

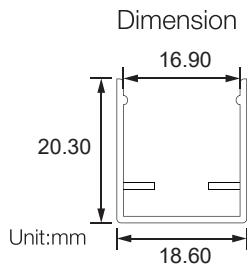


Recessed

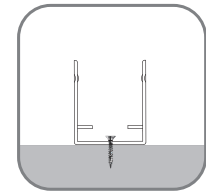


Model	W x H(mm)	Standard Length	Screw Holes	Holes Numbers	Suitable Product
SSC16S01-05	19.35*20.03	50mm	Φ4.0mm	2	F17, SF17

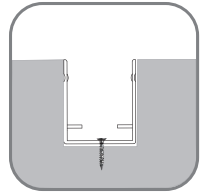
LED Linear Flex Mounting Channel



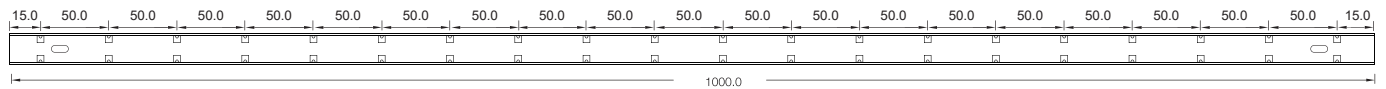
Installation Way



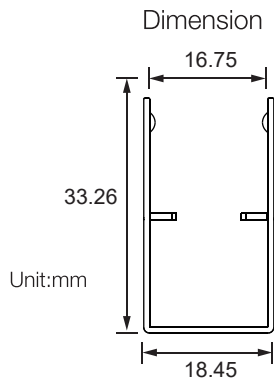
Surface Mounted



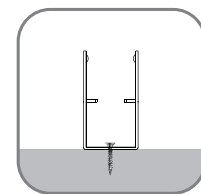
Recessed



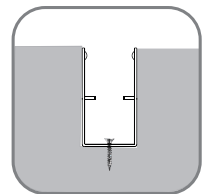
Model	W x H(mm)	Standard Length	Screw Holes	Holes Numbers	Suitable Product
SSC16S02-100	18.60*20.3	1000mm	4.0x10mm	2	F17, SF17



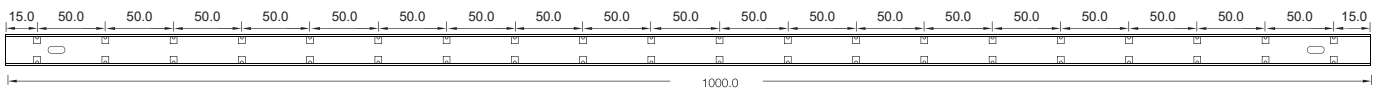
Installation Way



Surface Mounted



Recessed

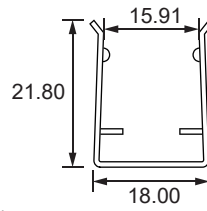


Model	W x H(mm)	Standard Length	Screw Holes	Holes Numbers	Suitable Product
SSC16H01-100	18.45*33.26	1000mm	4.0x10mm	2	F17, SF17

LED Linear Flex Mounting Channel

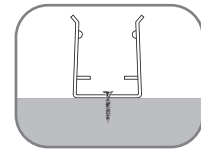


Dimension

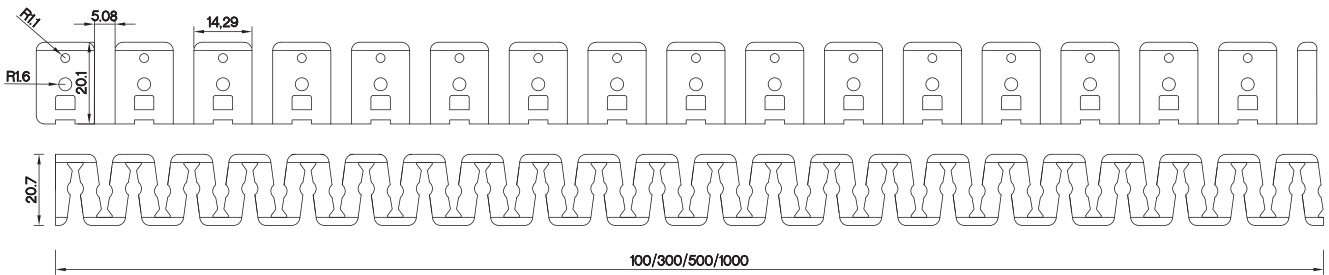


Unit:mm

Installation Way



Surface Mounted



Model	W x H(mm)	Standard Length	Suitable Product
SSC16FLX01	18.00*21.80	100mm	F17, SF17
SSC16FLX03		300mm	F17, SF17
SSC16FLX05		500mm	F17, SF17
SSC16FLX10		1000mm	F17, SF17